

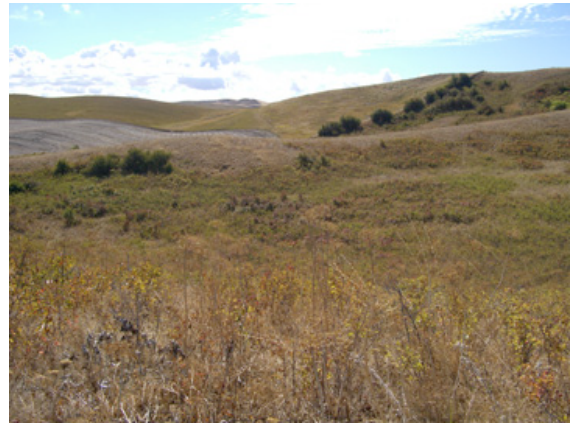
Spaulding Catchfly Mitigation Project

Seed Collection Protocol

Individuals Present:

Zack Funkhouser, Idaho Transportation Department
Clay Fletcher, US Fish and Wildlife Service
Juanita Lichthardt, Idaho Department of Fish and Game
Sara Cucksey, Palouse-Clearwater Environmental Institute
Talina Gossen, Palouse-Clearwater Environmental Institute
Tracy Brown, Palouse-Clearwater Environmental Institute

On August 21, 2007 *Silene spauldingii* seed was collected from Kramer Prairie, a Palouse Prairie remnant, located southwest of Colton, WA. Plants were identified in two distinct patches within the remnant. These patches will be referred to as the “ridgeline patch” and the “lower meadow patch”. The plants were still green and many were not ready for collection. Over 300 *Silene spauldingii* capsules were counted in total at both patches. Capsules were counted if they looked like they were flowering or in condition that appeared as if they would seed. Using this total number as a guideline, 10% of the capsules were collected. Only one capsule was taken from an individual plant. The capsules were then opened and seed deposited into a small envelope for storage and transport. Each capsule appeared to have 50+ seeds.



Kramer Prairie (Photo: Tracy Brown, PCEI)

Once the 30 capsule goal was achieved, it was determined that additional seeds could be collected from the upper ridgeline site since there were many more plants not included in the original 300 count. Collection protocol was as follows: for every 10 capsules counted that were ready to set seed 1 capsule was collected. A total of 41 capsules were collected at the Kramer Prairie site. A total of 15 capsules were collected at the Pitt Cemetery.

The seeds were then taken back to the Palouse-Clearwater Environmental Institute’s (PCEI) office located in Moscow, Idaho where they were counted. A total of 3,188 seeds were counted 388 seeds will be kept at the PCEI site for propagation and 2,800 were delivered to Washington State University. Juanita Lichthardt collected 1,530 seeds from Pitt Cemetery. Of those seeds, 330 will be propagated at PCEI and the additional 1,200 seeds were delivered to the Washington State University Plant Materials Center for propagation.

Additional collecting was completed by Lichthardt on August 3rd at Upper Steptoe Canyon site where she collected 600 seeds and on August 17th at Genesee South site where 406 seeds were collected. PCEI will propagate 200 seeds from the Upper Steptoe Canyon site and 6 seeds from the



Spaulding Catchfly in flower (Photo: Tracy Brown, PCEI)

“connecting people, place and community”™ for twenty-one years

Genesee South site. WSU received 155 seeds from Upper Steptoe Canyon and 400 seeds from Genesee South.

Total seed collected: 5,724

PCEI to propagate: 924

WSU to propagate: 4800

Plants identified during the collection:

Balsamorhiza sagittata Arrowleaf balsamroot
Helianthella uniflora Little sunflower
Geum triflorum Prairie smoke
Hieracium albertinum Western hawkweed
Lithospermum calycosum Stoneseed
Pseudoroegneria spicata Bluebunch wheatgrass
Festuca idahoensis Idaho fescue
Symphoricarpos albus Common snowberry
Amelanchier canadensis Serviceberry
Rosa nutkana Nootka rose
Rosa woodsii Woods rose
Gentiana sp. Gentian
Agastache sp. Mint
Potentilla glandulosa Sticky cinquefoil
Perideridia gairdneri Yampah
Prunus virginiana Chokecherry
Poa pratensis Kentucky bluegrass
Dipsacus fullonum Teasel
Bromus inermis Smooth brome
Centaurea solstitialis Yellow star-thistle
Cirsium vulgare Bull thistle

“connecting people, place and community”™ for twenty-one years

PO Box 8596 • 1040 Rodeo Drive • Moscow, ID • 83843 • (208) 882-1444 • info@pcei.org • www.pcei.org

♻️ Printed on 100% post-consumer waste – processed chlorine free