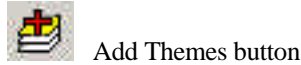
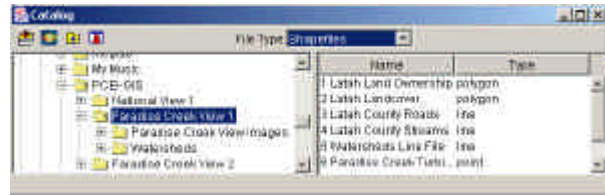


Activity Three: Exploring Airphotos

Open ArcExplorer, then a new ArcExplorer *project* by selecting the *File* menu, and *New ArcExplorer Project*.

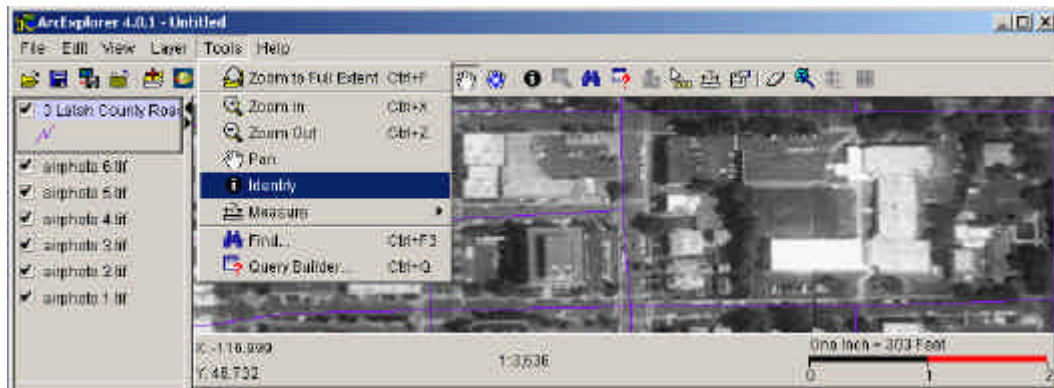
Once the view is open, select the *Add Themes* shortcut, which should open the *Catalog* Pop-up window. Once the window is open navigate to the **PCEI-GIS** folder, and open the **Paradise Creek View 1** Sub-folder. Add the **Latah County Roads** theme to the view.



Then open the **Paradise Creek View Images** sub-folder and toggle the file type (upper left of the *Catalog* window) to *Images*. A list of *Image Themes* should display from which you should add only **airphoto 1** through **airphoto 8** to the view, with the *Roads theme*. Close the *Catalog* and enlarge the *mapview*.

Zoom out on the image until you can see the large rectangle created by the airphotos and be sure the *Latah County Roads theme* is on top of the images on the *Legend*. You may have to click and drag the theme to move it, and you may want to make the roads appear black (change theme properties), but it is not necessary. Select the *View* menu and turn on the *Scale Bar* by selecting it from the drop-down menu.

The view should now have a large rectangle create by the airphotos. *Zoom in* until you have the City of Moscow (in the lower half) taking up most of the view. In the view you can identify the names of roads using the *Identify* button when **Latah County Roads** is the *Active Theme*. Now explore/navigate the images of Moscow, ID using the navigation tools and find the following things using the *Identify* key, your eyes, and knowledge of your town. Record the results in Decimal Degrees (from the *Scale Bar*) and be careful with + & - numbers.



The Kibbie Dome: X: _____ & Y: _____

Your House: X: _____ & Y: _____

One Interesting Thing/Point of Personal Interest to You:

Name _____

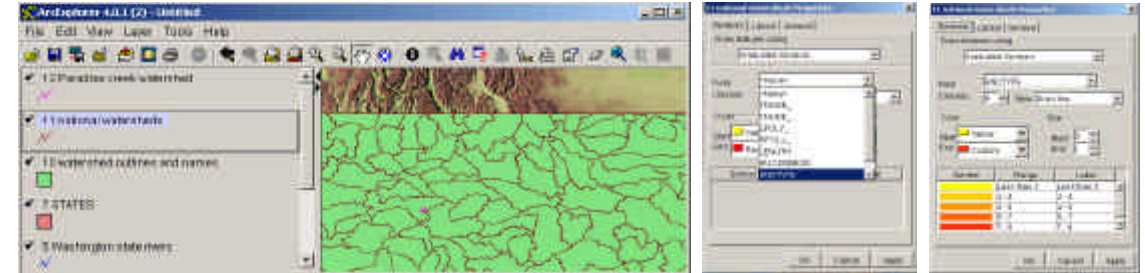
X: _____ & Y: _____

Activity Four: Watershed Address

Open ArcExplorer, then a new ArcExplorer *project* by selecting the *File* menu, and *New ArcExplorer Project*.

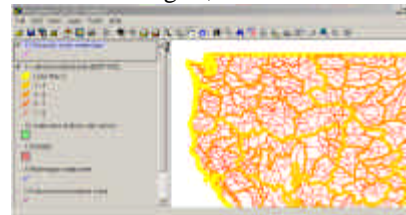
Once the view is open, select the *Add Themes* shortcut, which should open the *Catalog* Pop-up window. Once the window is open navigate to the **PCEI-GIS** folder, and open the **National View** Sub-folder. Add the following themes to the *View*: 2 Idaho state rivers, 3 Palouse river-paradise creek, 5 Washington state rivers, 7 States, 10 Watershed Outlines and names, 11 national watersheds and 12 Paradise Creek Watershed.

From the *Image Files* (show by changing the file type from shapefile to image, in the upper corner of the *Catalog* window) also add the hillsh-na.tif theme to the *view*. When all the *themes* are toggle 'on', the *view* should something like this:



To make this *view* more useful, we will have to make modifications to the *theme properties*. Begin by double-clicking on the **National Watersheds** theme; this should bring up the *Properties* pop-up window, shown above.

Select the **Graduated Symbols** option from the *Draw Features Using* pull-down menu. This will bring up a new *properties* menu that is shown on the far right above. In this window set the field to **BNDTYPE** using the drop-down menu, change the size options to **9** for the top and **1** for the bottom, and finish by selecting apply and hitting OK. You have just finished modifying the *theme* to show the different layers of watersheds as different colors. The largest, and most inclusive, are lighter yellow/orange and the smallest are darker, as shown below.



Now we must make easy changes to the other shapefile themes. Begin by double clicking the **Paradise creek watershed** theme and bring up the properties pop-up window. Click on the color box and scroll down to select bright yellow, then click OK. This will change the line color to yellow for the *theme*. Follow this procedure and make the following changes to the rest of the themes. Watershed outlines and names-change the fill style to **transparent** and the outline color to yellow, STATES- change to **transparent fill** and a black outline color, and change the line color for the 3 'river' themes to blue. To finish the *view*, move the watershed *themes* (click and drag) below the rivers themes on the *Legend*. Using the *Identify* tool, on the watershed outlines theme and the rivers themes fill in the following blanks.

Paradise Creek flows into the _____ River first. This river joins the _____ River below Palouse Falls, before finally flowing into the _____, and eventually the _____ Ocean.