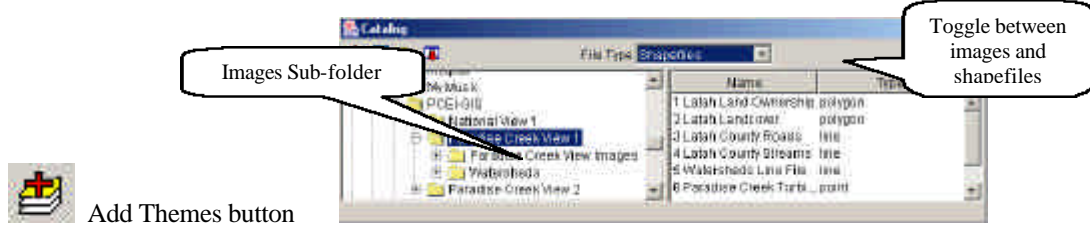


Activity Three: Exploring Airphotos

Open ArcExplorer, then a new ArcExplorer *project* by selecting the *File* menu, and *New ArcExplorer Project*.

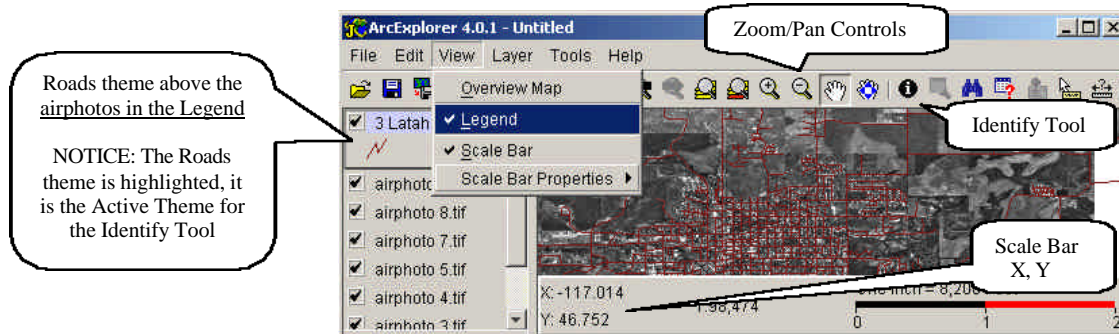
Once the view is open, select the *Add Themes* shortcut, shown below, which opens the *Catalog* Pop-up window.



Once the window is open navigate to the **PCEI-GIS** folder, and open the **Paradise Creek View 1** Sub-folder. Add **Latah County Roads** theme (shapefile) to the view, by double-clicking its name on the right side of the window.

Then open the **Paradise Creek View Images** sub-folder and toggle the file type (upper left of the *Catalog* window) to Images. A list of *Image Themes* should display from which you should add only **airphoto 1** through **airphoto 8** to the view, with the Roads theme. Close the *Catalog* and enlarge the *map/view*.

Zoom out on the image using the *zoom out* tool from the *Tools* menu until you can see the large rectangle created by the airphotos, and be sure the Latah County Roads theme is on top of the airphotos on the *Legend*. You may have to click and drag the theme to move it, and you may want to make the roads appear black (change theme properties), but it is not necessary. Select the *View* menu and turn on the *Scale Bar* by selecting it from the drop-down menu.



The view should now have a large rectangle create by the airphotos with the **Latah County Roads** theme displayed on top of them. Zoom in until you have the City of Moscow (in the lower half of the rectangle) taking up most of the view.

In the view you can identify the names of roads using the *Identify* button from the *Tools* menu, or the shortcut, when **Latah County Roads** is the *Active Theme*, see above. The names will appear in a pop-up window under the attribute category FENAME when the user clicks on the map. Try to find the street you live on.

Now explore/navigate through the images of Moscow, ID using the navigation tools (Pan, Zoom In/Out, Full extent) and find the following features using the *Identify* key, your eyes, and knowledge of your town. Record the results in Decimal Degrees (from the Scale Bar) and be careful with + & - numbers.

The Kibbie Dome is at: X: _____ & Y: _____ Coordinates

Your House: X: _____ & Y: _____ Coordinates

One Interesting Thing: Feature Name _____

X: _____ & Y: _____ Coordinates

