

PCEI has moved home to Rodeo

The Palouse-Clearwater Environmental Institute (PCEI) moved into a new home! We recently purchased 7.6 acres on Rodeo Drive in Moscow, and with the help of over 40 volunteers, lots of donated boxes and food, we moved on Sunday, December 12, 2004. The new office was functional within a day or two, with plenty of room for all our employees and volunteers!

Our new property includes a house, a second office building, several outbuildings, a pond and lots of open space. It provides a great opportunity for PCEI and for the community, functioning as "an urban nature center" for our area. Our stream restoration projects, our environmental education work, and our community garden have all benefited. Initial renovations have developed indoor office spaces for all our programs and consolidated storage of our equipment. Next steps include wheelchair access, composting toilet facilities, parking spaces, and other improvements. You can view the progress at <<http://www.pcei.org/rodeo.htm>>.



In February, the Moscow High School Environmental Club and a Biology class became one of the first groups to visit our new home. They toured the site and brainstormed ideas for future projects. Here the group studies the pond, with the PCEI buildings in the background. Photo: Tom Lamar.



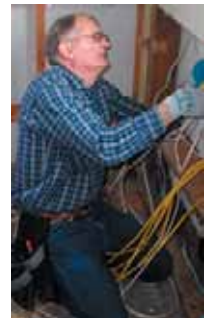
PCEI Project Manager, Ken Hobson cares for the newly established native plant nursery in December at the new PCEI home. Photo: Tom Lamar.

on a pathway stone leading to the house. Opportunities are available at many levels, including having your name on a building, rooms, windows, or even the composting toilet! Please contact our office if you would like to speak with someone about a pledge, learn more about the recognition options, or if you'd like to make a gift in the form of stocks or bonds.

Join us for a house warming party, as PCEI celebrates its NEW home and land! All are invited, Friday April 8 from 4 pm-7 pm. Catch the special shuttle bus from downtown and enjoy the ride to our new office with fellow community members. Watch www.pcei.org for updated information.

The possibilities for PCEI to demonstrate our commitment to environmentally friendly choices are exciting. Our goals for this beautiful site include open space preservation, rainwater collection, covered bike parking, examples for "green" building practices, and alternative energy systems. We expect to continue our role as an environmental resource for the community by offering public demonstrations of these practical and sustainable choices.

The PCEI Board invites you to be a part of our vision by making a special financial contribution. Your gift will be used toward the property purchase and the necessary improvements, helping us to meet our initial capital campaign goal of \$500,000. To date, more than \$207,000 has been raised toward that goal! Thank you to the many kind and generous contributors to PCEI! We offer special recognition for gifts at higher amounts. With a \$500 contribution, we will put your name



Volunteer extraordinaire, Art Gropp had his hands full rewiring the buildings at PCEI. As a "retired" electrician he donated all of his time to make this place extra special for us. Photo: Tom Lamar.

What's going on in Watersheds?

By Tracy Brown

The Watersheds Program is excited to welcome three new AmeriCorps members to the Stream Team, Emily Poor the Native Plant Specialist, Ciara Cusack, the Riparian Habitat Specialist and Michael Danahy, the Community Involvement Specialist. These three will work with Tracy, Ken and Randy to help implement our 2005 restoration projects. Since Kajs's departure in late December, Tracy and Ken have taken over the management and development of the Watersheds Program. Tracy Brown is the new Watersheds Program Coordinator and Ken Hobson is Watersheds Project Manager.

Randy has been with PCEI since October of 2004 and has been a major force in moving our operations to our new site on Rodeo Drive. Randy, the Community Stewardship Specialist, has an architecture degree from WSU and experience working with children and volunteers. He is currently helping us research and design our new nursery facility. Randy spent last fall helping in the field at our restoration sites and will play a huge role in training the new members. Emily, Ciara and Mike will begin work in early February. We will begin our field season in late February by finishing up our 2004 Lucky Acres Project on Tammany Creek in Lewiston.

Emily is a long-time PCEI volunteer and UI student studying conservation biology. Her passions are native plants, protecting native ecosystems and playing the trombone. Emily's primary responsibility at PCEI will be assisting in the management of our on-site nursery. She will also play an important role in developing native plant and weed identification brochures and developing weed management plans for our restoration sites.

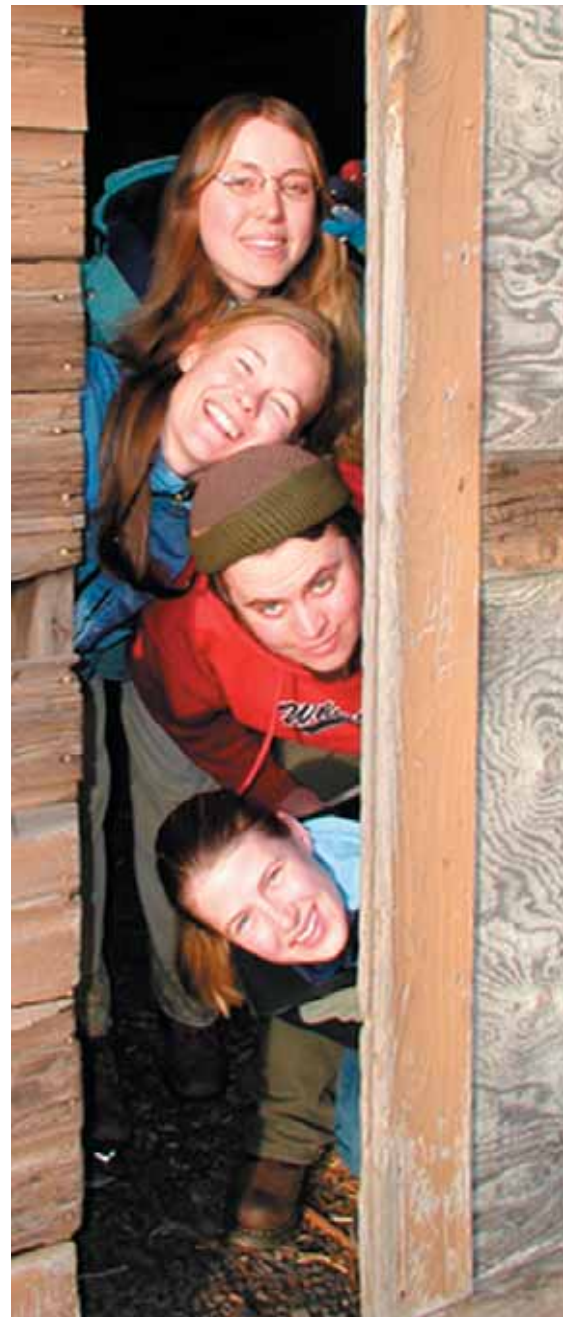
Ciara is a recent UI graduate in Fisheries Resources. Her goal is to pursue a career in riparian restoration and she has experience working for the U.S. Forest Service monitoring fish habitat. Ciara's main responsibility at PCEI will be assisting in monitoring the effectiveness of restoration activities. She will also work on developing wildlife habitat education materials to compliment Emily's work and will help manage our data and GIS projects.

Mike graduated from the University of Puget Sound with a BA in History. A Moscow native, Mike's enthusiasm for fishing has sparked his interest in riparian restoration. While at PCEI, Michael's main responsibility will be to coordinate volunteers and promote community involvement in PCEI activities. Michael will help the PCEI Team engage the local community and provide educational opportunities about local water quality issues.

In addition to the Tammany Creek Project in Lewiston and the Partridge Creek

Project in Elk River, we will also begin work on an adjacent property upstream on Tammany Creek. We will be starting two other projects on the South Fork Palouse River on the Elk's Lodge Golf Course property and up stream at Robinson Park. This year we will complete our Clyde Park Project that has been underway since 2003.

Luckily, we have several interns and many dedicated volunteers to help. Javan Bauder our amphibian specialist will be monitoring again this year. He will monitor wetland restoration projects on Paradise Creek and the South Fork Palouse River. Josh Hyde is our newest intern and will focus on restoration implementation. Matt Carroll has been a dedicated volunteer and will continue helping us with implementation, research and grant writing. Jessica Tubbs has just started volunteering with us and will be our marketing specialist and will assist in the development of our education brochures and posters.



From top to bottom, Emily, Ciara and Randy, are AmeriCorps Watershed members, while Sara, on the bottom, is an Environmental Education AmeriCorps member. Photo: Tom Lamar.

Are you interested in owning your own home, yet living in a cooperative neighborhood that shares meals, outdoor spaces, and other amenities? Are you interested in a home that takes ecology into consideration? Co-housing is a popular form of housing that is being created and built all over the U.S. See, www.cohousing.com for more information. If you'd like to be part of a committee to bring co-housing to Moscow, please contact Jyotsna "Jo" Sreenivasan, at <jyotsna64@aol.com> or at 208-892-0730.

PCEI places AmeriCorps members in Idaho and eastern Washington

By Tiffany Cooper

Our new AmeriCorps program, The Palouse-Clearwater Center of the Northwest Service Academy, is off to a great start. We placed nine members last October in various schools, non-profit organizations, and government agencies across Idaho and eastern Washington.

Two members are serving at the Washington West Valley Outdoor Learning Center with the West Valley School District in Spokane, teaching inquiry and hands-on science. We have members at the Environmental Resource Center, Wood River Ride Share, and at the Sawtooth National Recreation Area, all in Ketchum, Idaho. Members are also serving at the Deer Flat National Wildlife Refuge in Nampa, the Nez Perce Soil and Water Conservation District in Culdesac and at PCEI.



Our first crew of AmeriCorps members at orientation in McCall, Idaho October 2004. Photo: Tiffany Cooper.



A group of new AmeriCorps recruits participate in a blindfolded teambuilding exercise next to our house in February 2005. These new AmeriCorps members will soon head to their sponsoring organizations around the states of Idaho and eastern Washington. Photo: Caryl Bauwens.

Each project is different; we have members working on Safe Routes to Schools, environmental education, after-school programs, watershed restoration, community gardens, and volunteer recruitment. It is amazing what can be accomplished when AmeriCorps members put their best foot forward and start "getting things done for America!"

This January, we are gearing up for our second orientation with another ten members. Like our first group, they are serving all over the state and region, from Ritzville, Washington to Idaho Falls, Idaho. We are excited about all of our members and the work they are undertaking. This spring we are also placing 20 members in National Forests and Wilderness areas in Idaho to do trail work in conjunction with a Youth-Corps.

Sponsoring agencies develop projects and assist with recruiting members and then provide daily guidance and supervision. They are selected through a competitive process based on their proposal for a capacity-building placement that meets NWSA-PCC objectives and critical community needs.

If you are interested in sponsoring an AmeriCorps member, request for proposals for positions starting in October 2005 are due March 25, 2005. The application and RFP can be downloaded from our website at www.pcei.org/pcc or by contacting Tiffany Cooper at cooper@pcei.org.

This newsletter (ISSN# 1087-9374) is published quarterly by the Palouse-Clearwater Environmental Institute (PCEI). 3rd Class postage paid in Moscow, ID. The Mission of PCEI is to increase citizen involvement in decisions that affect our regional environment. Through community organizing and education, we strive to enable members of our community to find effective and sustainable solutions to local and regional environmental problems. PCEI is a non-profit organization. Donations are tax deductible. Articles for publication and letters to the editor are welcome and must include the name and address of the author. Opinions expressed in the newsletter are those of individual authors and not necessarily those of PCEI.

PCEI, PO Box 8596 Moscow, Idaho 83843

208-882-1444 fax:208-882-8029 email: info@pcei.org <http://www.pcei.org>

Editors: Caryl Bauwens, Tom Lamar. Template Design: Beth Case. Contributors: Tiffany Cooper, Kelly Riley, Jake Smulkowski, Greg Fizzell, Tom Lamar, Sara Lynd, Tracy Brown, Cece Connors, Heather Crawford-Carlson

People interested in being on our mailing list should join PCEI (see page 7).

This newsletter is printed on 100% recycled paper with 30% post-consumer content.

Spin a Plate, Help Spin the World!

By Heather Crawford-Carlson

Have you been frustrated by nice community events using disposable styrofoam plates and plastic flatware? Would you like to help reduce waste generated at community dinners, while adding a little class? Are you looking for a reason to stop by our new location at 1040 Rodeo Drive in Moscow? Now you can donate old plates and utensils to the new Plate Project!

PCEI is creating a new community resource called "The Plate Project" headed up by LCSC AmeriCorps member, Heather Crawford-Carlson and Community Outreach Coordinator, Tiffany Cooper. Originally, this fun concept spawned from planning a wedding reception that hoped to achieve an environmentally low-impact good time, by eliminating the use of disposable plastic and paper plates, cups and utensils. From thrift stores to garage sales, many dishes, small plates, cups, and flatware were acquired at a rate cheaper than renting price. In 2005, these items were donated to PCEI to inspire others to reuse during those fun gatherings, both private and public.

In its debut, the plate project helped furnish many of the plates and utensils for the MLK Jr. Breakfast Celebration, hosted by the Latah County Human Rights Task Force on Saturday January 15, 2005. The Moscow High School Environmental Club also donated plates, flatware and cups to the project in time for the breakfast, helping make it a successful event.

At the moment, we have 151 large plates, but we are still accepting donations. Our goal is to have 250 plate sets. We could use forks, knives, spoons, coffee mugs, bowls, and glasses. You may even see your family plates used at community events for years to come. We look forward to many environmentally friendly community events in the future. Thanks to all who have donated so far. It is nice to meet our supporters.

If you are interested in using the items from the plate project, a donation is requested along with a \$100 refundable deposit. For more information contact Heather at <heather@pcei.org> or Tiffany at <cooper@pcei.org>.

The Volunteers

By Cece Connors

In October 2004, a call for help was sent to many. PCEI had found a new home and there was much to be done for the move. Those passionate about their community and supporting this environmental institute came from many directions to join this great endeavor. They were "The Volunteers."

They were electricians and artists, carpenters and computer experts, students and teachers. From October through December they swung hammers and hung windows, installed doors and built walls, pruned bushes and packed box upon box.

The Volunteers came on a sunny Sunday in December to load and unload the moving van. When it was full, they offered up their own vehicles to help with what remained. The Volunteers then gathered at the new location. Forming lines, as if passing buckets of water to put out a fire, they unloaded boxes until their backs hurt, then went back to unload the van again. Moving an 18-year-old organization took months to accomplish and, with nary a complaint, The Volunteers gave their best to PCEI.

The employees are extremely grateful for this new home that provides breathtaking sunsets and workday comfort. The Volunteers will forever be the heroes in this story. Their



Volunteers line up to unload boxes into our new "wax-wing" building. The building was so named when a flock of Cedar Waxwings flew over the building on moving day. Photo: Tom Lamar.

Volunteer Opportunities at PCEI:

- Vehicle maintenance
- Yard/Tree maintenance: tree pruning, snow plowing, shoveling, leaf raking, and mowing.
- Recycling
- Horseshoe playing
- Fence building/removing
- Reinforcing outbuildings/outbuilding construction (doors, framing, etc)
- Electric wiring in outbuildings
- Basement organizing
- Watershed Restoration site steward
- Restoration Site Monitoring
- Watersheds program planning committee
- Amphibian surveying and trapping
- Gardening
- Compost specialist

To help, e-mail, <info@pcei.org> for more information or call us at 882-1444.

energy and enthusiasm will remain a source of inspiration for the employees as they continue their work in the gardens, along the stream banks and in the classrooms. The Volunteers will be there, because their dedication never ends.

Today, a new call is being sent to The Volunteers, an invitation. Come enjoy the sunsets at our new home. It's a place for us all. Relax, breathe in the fresh air, take a walk, explore the pond life, play horseshoes, take a nap under the trees. At this new home, The Volunteers are always welcome.

Gardening for Community

By Kelly Riley

A community garden is a piece of land shared by friends and neighbors for growing vegetables and flowers, and providing opportunities for positive social interactions and recreation. PCEI has sponsored the Moscow Community Garden on west "C" Street since 2000. The Emanuel Lutheran Church generously provides the land at that location. The "C" street garden operates as a leased plot garden. Available spaces are rented for a minimal fee to members of the community needing space to grow.

With the big move to Rodeo Drive comes the opportunity for another community garden project. The focus of the new garden will be a "community pantry". The garden will be used as a demonstration site for sustainable growing and the harvest will be donated to local food banks and the volunteers that help the garden grow. Water conservation, composting, organic soil amendments, mulching and cultivating will be emphasized.

The goal of the new garden is to encourage community relationships and increase an awareness of sustainable growing and the value of green space in our community. Garden volunteers will work together to learn new skills, reap the social and physical benefits of gardening and provide nutritious food for low-income families.

Planning is underway and planting will begin as soon as mud season is past. Volunteers are needed to make this garden grow! If you would like to get soil in your soul with the Community Pantry project or by leasing your own plot at the Moscow Community Garden, please contact Kelly Riley at PCEI, 882-1444 or <makeitgrow@pcei.org>.



Volunteers work in the Moscow Community Garden this winter. Photo: Kelly Riley

The New Green Living Project

By Kelly Riley

With over seven acres of land surrounding our new home it is time to practice what we promote. We have a vision for the new location to inspire, inform and enable the community to live more sustainably. The goal of the new Green Living Program is to offer practical solutions to environmental problems. The five areas of work will be alternative building, alternative energy, water conservation, sustainable food systems and waste management. We have plans to explore and create demonstration projects to instill the desire to change by example. Through workshops and model systems we will work to provide information and encourage the integration of 'green living' practices in the community.

With the excitement of living on our new property, ideas are running rampant. Initial projects we envision include a strawbale compost toilet facility, a strawbale bicycle parking structure with a living roof and a permeable 'pavement' parking lot. Water catchment systems and solar water pumps will be an important link to our organic community pantry garden. The list is long. PCEI's new home will be a work in progress for many years.

The stimulation is great- to create an environmental learning center and conserve open space in the midst of established and developing neighborhoods. Time, energy and funds are needed to bring these projects to reality. Watch PCEI's website for workshops, volunteer opportunities and project updates. The possibilities for this wonderful piece of property are revitalizing.



PCEI's new home provides opportunity and space for green living. Photo: Kelly Riley.

PCEI's Wish List:

- Reliable pick-up truck
- Small tractor with implements
- GPS unit

The Benefits of Environmental Education

By Sara Lynd and Greg Fizzell

Education in the 21st century is constantly evolving. Many hurdles stand in the path of administrations, educators, parents, and students despite the common goal of a quality learning experience for students. The last few decades have brought sweeping changes in education reform and the introduction of new teaching methodologies, all with the goal of reaching out to the most needy and ensuring that all children succeed at their grade level. One of the many new methodologies to emerge during these times of transition is environmental education.

Environmental education (EE) is an approach to teaching that combines the school and community environment with several best practices for teaching. In EE, the "environment" can be the immediate surroundings of the school, the local park system, or greenway of the community. Environment is an inclusive term that brings together ecological systems with the social systems of a community.



The United Nations Educational, Scientific and Cultural Organizations (UNESCO) has defined EE as "a learning process that increases people's knowledge and awareness about the environment and associated challenges, develops the necessary skills and expertise to address the challenges, fosters attitudes, motivations, and commitments to make informed decisions and take responsible action." (i) Administrators and educators use several practices including

integrated-interdisciplinary instruction, service-learning, collaborative decision-making processes, and student-centered teaching to connect local natural and community surroundings to improve teaching and learning (ii).

EE has proven successful in today's world of standardized tests and assessment. Several reports have tracked EE's success in increasing standardized test scores and grade point averages in schools that have existing EE programs. A report compiled by the National Environmental Education and Training Foundation (NEETF) found that in addition to better academic performance, children in EE programs cooperate better in class and show more interest in learning than kids without exposure to EE (iii).

The positive effect of EE across content areas and in student performance in schools that use the environment as an integrating context (EIC) was noted by the State Education and Environmental Roundtable (SEER) (ii). A study of 40 schools participating in an EIC based curriculum, scored higher on standardized tests in math, science, reading, writing, and social studies. Additionally, the study noted increased motivation and engagement in learning as well as improved classroom behavior and focus. Another report on the status of EE in Washington State had similar findings on the positive, encompassing effects of EE. In addition to finding that EE increased test scores on state standardized tests and improved classroom behavior, the study also reported an increase in critical

thinking skills and motivation for learning (iv).

Moscow and the state of Idaho have much to gain by integrating EE into the traditional classroom setting. With Idaho's expanse of state and federally owned rangeland, wilderness areas, and national forests, Idaho's children will be best served when knowledgeable about their environment and able to understand and participate in future land and environmental policy decisions.

Several schools across the state have embraced the EIC model and have been incorporating these practices in their classroom instruction and school philosophy. Here in Moscow, several teachers have taken the initiative by including EE within their lesson plans in addition to having PCEI EE staff lead guest programs. The McCall Outdoor Science School (MOSS), operated jointly by the University of Idaho and PCEI, provides a weeklong intensive EE experience for fifth and sixth graders across the state. Schools, students, teachers, and communities greatly benefit from school programs like MOSS by providing learning experiences not readily available to all children.

To learn about Moscow's Environmental Education Summit, see page 7.

Research into the academic learning of over 1,000 MOSS students from 2001-2004 has shown positive results. Our assessment conforms to a pretest-posttest-delayed posttest design, and includes a control group component to increase the validity of our findings.

We have found that students attending the MOSS program demonstrate a significantly higher level of general environmental and science knowledge immediately following the program than before the program - reflecting an average score improvement of between 15 and 20 percent on a 100 percent scale. At the eight-month follow-up, the children's knowledge remained significantly higher than before the program. MOSS students showed no significant difference in knowledge before the school than that demonstrated by a control group. At the eight-month follow-up, however, MOSS students scored significantly higher than the control group.

In addition, more than 90% of attending teachers report that they agree or strongly agree with the following statements:

1. The program addresses achievement standards important to my grade/classroom.
2. My students are more knowledgeable of issues important to Earth's ecosystems.
3. Programs like MOSS would be a valuable addition to Idaho's 5th-6th-grade science curriculum.

This research has helped and will continue to help MOSS improve the content and methods used during the program with the ultimate goal of enhancing the academic achievement of attending students. In addition, it demonstrates that experiences like MOSS and PCEI's school-based EE programs can provide the tools for students and educators to meet state and national education standards.

Sources found on page 7.

Moscow to host Education Summit

By Jake Smulkowski

Environmental educators from all corners of Idaho and beyond are eager to meet in Moscow to network, share, and discuss their field.

The Idaho Environmental Education Association will be hosting its annual summit March 4th and 5th at the University of Idaho SUB Ballroom. The conference is entitled "At the Core of Discovery: Exploring Lewis & Clark Bicentennial Opportunities", and will focus on the development and integration of Lewis & Clark studies in the state.

The conference will include presentations from governmental agencies, private business, and non-profit organizations, a panel discussion on the changes that have swept across Idaho since Lewis & Clark's journey, and a keynote speech by Dr. Carlos Schwantes, author of *So Incredibly Idaho!* Other scheduled events include a showcase of K-12 student work, optional field trips and service projects, and an affinity of group gatherings.

For more information about the conference, including registration materials, visit, <http://www.idahoeec.org>.

Sources from *The Benefits of Environmental Education*, page 6.

- i.) Report Card on the Status of Environmental Education in Washington State 2004. Available online at www.eeaw.org.
- ii.) Lieberman, G.A., & Hoody, L. L. 1998. "Closing the Achievement Gap: Using the Environment as an Integrating Context for Learning." San Diego, CA: State Education and Environment Roundtable.
- iii.) Environmental Learning in America: Working Toward Nationwide Environmental Literacy, National Environmental Education & Training Foundation, June 2002, page 8; www.neetf.org/pubs/NEETF_Annual_Report_2001.pdf
- iv.) Report Card on the Status of Environmental Education in Washington State 2004 is available online at www.eeaw.org.

Information on MOSS can be found at: www.pcei.org/education/moss.htm

Become a Member of PCEI!

Yes I want to support the

**Palouse-Clearwater
Environmental Institute**

Yes I want to renew my membership

Name _____

Address _____

City _____

State _____

Zip _____

Phone _____

Email _____

Please contact me about volunteering
Please keep my membership anonymous
\$35 Basic Membership
\$75 Palouse Protector
\$150 Friends of the Palouse-Clearwater
\$15 Limited income/Student
Additional gift of \$ _____

Please direct my gift to the following program:

Environmental Education
Community Garden
Watersheds
VanPool/Transportation

Endowment gift of \$ _____

Capital campaign gift for \$ _____

please use it for _____

Mail to: PCEI POBox 8596 Moscow, ID 83843

PCEI Education Program welcomes a new member



Sara out enjoying some fresh air. Come by and meet her, along with the rest of our AmeriCorps members! Photo: PCEI.

Sara Lynd recently joined the PCEI Environmental Education (EE) team shortly after completing her Graduate Certificate in EE at the McCall Outdoor Science School (www.pcei.org/education/moss.htm) in December where she fell in love with teaching. Sara will be working with PCEI as an AmeriCorps member of the Northwest Service Academy and the Palouse-Clearwater Center (<http://www.pcei.org/pcc/>)

Sara was born in Coeur d'Alene, Idaho but was raised in the mountains near Helena, Montana. She graduated with a B.A. in Liberal Arts with an emphasis in Environmental Studies from Colorado State University in Fort Collins, Colorado where she also swam competitively for four years. Sara enjoys winter sports, mountain biking, camping, and rafting. She can also often be found in the UI pool at 5:30 am weekday mornings with the better half of the PCEI EE program.

Calendar of Events (for updates, visit www.pcei.org/calendar.htm)

March 4, Friday- The Idaho Environmental Summit will be held at the Student Union Building on the University of Idaho campus in Moscow. For more information visit, www.idahoee.org.

March 23, Wednesday- PCEI board meeting at 6:30 pm at 1040 Rodeo Drive.

March 30, Wednesday-April 1, Friday- Join the Idaho-Washington Human Rights Conference in "Finding the Center." Visit www.uidaho.edu/ftc for more information.

April 2, Saturday- Cougar Pride Days Project, the 1st Annual Stream Clean-up in Pullman. For more information e-mail <watersheds@pcei.org>.

April 6, Wednesday- 7, Thursday- The Idaho Department of Water Resources hosts a hearing on Naylor Farms and their water right at the Latah County Fairgrounds beginning at 8:30 a.m. both days. For more information visit www.protectourwater.net.

April 8, Friday- PCEI's Open House at 1040 Rodeo Drive. Bike, walk or take the shuttle bus from downtown Moscow. 4 pm - 7 pm. For more information visit, www.pcei.org/rodeo.htm.

April 10, Sunday- 16, Saturday- Join the rest of the country in celebrating Environmental Education Week, and prepare for Earth Day.

April 20, Wednesday- PCEI's board meeting will be held at 6:30 pm at 1040 Rodeo Drive.

April 22, Friday- Celebrate our planet on Earth Day!

April 23, Saturday- Earth Day Celebration and Make a Difference Day-Paradise Creek 15th Annual Stream Clean-up, meet at PCEI, 1040 Rodeo Drive.

April 30, Saturday- Arbor Day Planting Event on South Fork Palouse River. For more information e-mail, <watersheds@pcei.org>.

April 30, Saturday- May 1, Sunday- Renaissance Fair, to help out at the PCEI food booth e-mail, <renfair@pcei.org>.



**Palouse-Clearwater
Environmental Institute**
PO Box 8596 Moscow, ID 83843

Non-Profit Org.
US Postage
PAID
Moscow, ID
83843
Permit No. 417

Return Service Requested

PCEI is a member organization of:

- Washington State Combined Fund Drive
- Choices in Community Giving
- Washington Environmental Council
- United Vision for Idaho
- Western Sustainable Agriculture Working Group
- River Network
- Moscow Chamber of Commerce
- Pullman Chamber of Commerce

COMPLIMENTARY COPY
PLEASE JOIN PCEI TODAY!

Winter 2004-2005!