

Connecting
People, Place
and Community

Palouse - Clearwater Environmental Institute

Join PCEI for our 6th Annual **Animals of the Night** Educational Fundraiser!

Treat your family to a night of autumn fun and discovery! Join PCEI for our **6th Annual Animals of the Night** family event on **Friday, October 25th, 5pm to 8pm**. Explore the trails of the **PCEI Nature Center** as you learn about nocturnal animals, such as bats, wolves and raccoons, from local experts. The event features live animals, free snacks and beverages, games, crafts and storytelling.

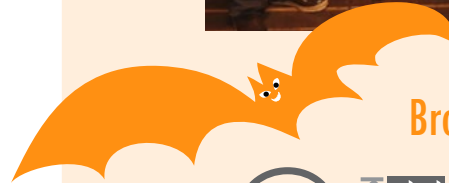
"PCEI's Animals of the Night has been a family favorite for years", says **Bree Rosenblum**. Although she and her family now live in California, they return to Moscow every autumn for this one-of-a-kind event.

Improvements to the PCEI Nature Center will make this year's Animals of the Night more enjoyable and accessible than ever (see page 3). The Center Stage of the **Nancy Taylor Welcome Pavilion** will be used to welcome guests to the event, and thanks to our **Spare-a-Square** donors, there is now a **universally accessible pathway** to the **Jim LaFortune Memorial "Groover" Restroom Facility** and our outdoor **Playscape**.

Animals of the Night is our most popular event of the year and we couldn't do it without the help of many awesome volunteers and local experts such as the **WSU Raptor Club**, the **Wolf Education and Research Center**, **UI Aldrich Entomology Club**, **Moscow Recycling Center**, and the **Moscow High School Environmental Club**.

Ticket prices: \$3/child, \$4/adult for PCEI members; \$4/child, \$6/adult for non-members (additional donations are welcome). Children under 3 get in free! **All proceeds support PCEI's education programs.** Bring a flashlight and dress for the weather. Costumes are encouraged!

If you have any questions or would like to volunteer, please contact Heather Huston, PCEI's Education Outreach Coordinator at serving@pcei.org or 208.882.1444.



Brought to you by



Idaho Gives
Latah County Community Foundation

Gritman Medical Center
Howard Hughes Appliance, TV & Sleepshop

Jeff's Electric
Landeck & Forseth, Attorneys at Law
Martin Trail, Financial Advisor
(Northwestern Mutual Financial Network)

Pickard Orthodontics

Alpine Vision Center • Allegra Print & Imaging
BookPeople of Moscow • Moscow Food Co-op
Rock by Design

Hyperspod Sports • Landgrove Coffee • Mikey's Greek Gyros
Moscow Building Supply • One World Cafe • Safari Pearl
Tye Dye Everything • Wild @ Art

INSIDE:

• Nature Center Improvements • Lindsay Creek Cleanup • Rose Creek Restoration • Outdoor Art • Call for Board Members

WHO'S WHO AT PCEI

BOARD OF DIRECTORS

Carole Wells *Co-President*
 Jim Ekins *Co-President*
 Josh Boyce *Secretary*
 Alexa Makhani *Treasurer*
 Pam Brunsfeld *Director*
 Gail DeSantis *Director*
 Jerry Long *Director*
 Janet Morris *Director*
 Jack Sullivan *Director*
 Jennifer Wik *Director*

STAFF

Thomas Lamar *Executive Director*
 Judith Brown *Business Manager/AmeriCorps Program Director*
 Joan Alexander *AmeriCorps Placement Coordinator*
 Randy Stevens *Implementation Coordinator*
 Heather Huston *Education Outreach Coordinator*
 Wendy Lawrence *Contract and Grant Coordinator*
 Jen Hiebert *Development Coordinator*
 Katie Peterson *Lead Environmental Educator*
 David Arnold *Restoration Technician*
 Carolea Webb *Administrative Assistant*
 Amy Wright *Administrative Assistant*
 Lara Jones *Confluence Program Director*
 Sherrie Jackson *Confluence Program Support Coordinator*
 Rob Loucks *Confluence Communication Specialist*

AMERICORPS MEMBERS

Hannah Glader *Environmental Educator*
 Brendan Jackson *Environmental Educator*
 Ryan Lazo *Nature Center and Watersheds Steward*
 Daniel Sidder *Nature Center Programs Coordinator*

INTERNS

Patrick Johnson *Sustainable Living*
 Rachit Singh *Website*

WEEKLY VOLUNTEERS

Sue Allard *Office Assistance*
 Gail DeSantis *Office Assistance*
 Clinton Ubhoff *House Plant Maintenance*
 Christopher Wright *Garden Care*

Events Calendar

Every Tuesday, Drop-In Volunteer Day, 10:00am-4:00pm, PCEI Nature Center. We are in constant need of volunteers to help maintain and improve our 12.3-acre Nature Center! Check our online calendar at pcei.org/events for details or just drop in!

Friday, October 25, Animals of the Night, 5:00pm-8:00pm, PCEI Nature Center. Explore the trails of the PCEI Nature Center as you learn about nocturnal animals, such as bats, wolves and raccoons, from local experts. **Ticket prices:** \$3/child and \$4/adult for PCEI members; \$4/child and \$6/adult for non-members. Children under 3 get in free! **All proceeds support PCEI's education programs.** Visit pcei.org/aotn for more information.

Saturday, October 26, Make a Difference Day, 10:00am-12:00pm, PCEI Nature Center. Join us for the nation's biggest day of community service! Visit pcei.org/event/make-a-difference-day for more information.

Friday, November 22, Nourish Non-Profit Friday for PCEI, 5:45pm-7:00pm, Nourish, 206 South Main Street, Moscow. All levels yoga. By donation (50% to benefit PCEI, 50% to Nourish's scholarship fund).

Tuesday, December 3, PCEI Annual Membership Meeting & Holiday Party, 6:30 pm-9:00pm, 1912 Center, Moscow. Vote for your Board of Directors, renew your membership, get updates on PCEI programs and enjoy great company. If you would like to become a board member or nominate someone for PCEI's Board of Directors, please fill out an online form today! Visit pcei.org/board-nomination for details.

Wednesday, December 4, Alternative Giving Market of the Palouse, 4:00pm-8:00pm, Prichard Art Gallery, 414 S. Main Street, Moscow. Honor family and friends by giving them meaningful gift cards from local nonprofits, such as PCEI. Give at the event or online (November 29-December 14) at agmpalouse.org.

Wednesday, December 18: PCEI Board Meeting, 6:30pm-8:30pm, PCEI Nature Center. Open to the public. Contact Board Co-President, Carole Wells, for an agenda, pcei.org/board.

For all the latest updates

Visit pcei.org/events | Like us on Facebook | Follow us on Twitter

Palouse-Clearwater Environmental Institute

PO Box 8596
 Moscow, Idaho 83843
 208.882.1444 • info@pcei.org • pcei.org

Visit our Nature Center

1040 Rodeo Drive in Moscow
 Open dawn to dusk, 7 days a week.

Follow us on Facebook & Twitter!

facebook.com/PCEI.org
 @PCEIorg

Go Paperless!

Ready to ditch the paper?

With all the information of our printed newsletter and 0% of the paper consumption, saving resources has never been so easy!

Visit pcei.org/gopaperless today!

Donor-Funded Improvements to PCEI Nature Center

Thanks to generous donations to the **Nancy Taylor Memorial Fund** and to the **Spare-a-Square** project, PCEI is now in an even better position to accommodate visitors to our 12.3-acre Nature Center.

The **Center Stage** of the **Nancy Taylor Welcome Pavilion** is seeing plenty of use as a shelter for educational programs and community events. Thanks to the generous support of over 50 people who attended **Gimme Shelter: A Dance for Nancy** on Friday September 13, 2013 **over \$1,000** was raised to continue construction of the Nancy Taylor Welcome Pavilion. Thank you to **Henry C. and the Willards** for the delightful musical stylings, **Moscow Brewing Company** for the delectable beverages, **PRLR Pizza** for the delicious cuisine, and to all the enthusiastic dancers for making this a night to remember. If you would like to support the completion of the Pavilion, visit pcei.org/nature-center/welcome-pavilion/.

Friday, October 11, 2013, was "concrete-pouring day" for the remaining section of our **universally accessible pathway** which connects our current pathway to the **Jim LaFortune Memorial "Groover" Restroom Facility** and our outdoor **Playscape**. We couldn't have done it without all of our **Spare-a-Square** donors. In particular, we'd like to thank the following organizations and businesses for their support: **Stepping Stones, Inc.**, **Disability Action Center (DAC)**, **Palouse Patchers**, **Gritman Medical Center**, **Pickard Orthodontics**, **Schweitzer Engineering Laboratory (SEL)**, **City of Moscow**, **University of Idaho Utility Executive Course** and **University of Idaho College of Business and Economics (sponsored by Doug Baker)**. There are still a number of squares available for dedication. Order yours today at pcei.org/spare-a-square.



Lindsay Creek Cleanup Event

PCEI would like to thank everyone who helped at the Lindsay Creek Cleanup Event on Thursday, October 10, 2013. Volunteers, including 7 employees from the **Clearwater Paper Corporation** and 1 from **Idaho Fish and Game**, removed garbage, poison hemlock and Scotch thistle from the Lindsay Creek restoration site. After all that hard work, they really appreciated the coffee donated by **One World Cafe** and the scones donated by **Todd Unger**.

Clearwater Paper Corporation has generously supported PCEI restoration projects in the Lewis-Clark Valley since 2009.



PCEI Executive Director, Tom Lamar (left), and Clearwater Paper Corporation Division Human Resources Manager, Scott Gorbitt (center), pulling weeds at Lindsay Creek.

Become a PCEI Sustainer Through Monthly Giving!

Your monthly gift means sustainable funding for the work you care about. And it's so easy.

Visit pcei.org/monthly-giving choose the program or fund you want to support and we'll send you a free gift!

Donate...	...you'll receive
\$5/month	1 Latah Lentil Soup Mix*
\$10/month	1 Pear Gingerbread Mix*
\$15/month or more	1 Latah Lentil Soup Mix* & 1 Pear Gingerbread Mix*

*donated in part by **Fast Foodie**

"Your automatic donation process makes it easy for me to support the education programs that I value. This is one charge on my monthly credit card bill that gives me great pleasure because I know where my money is going and that I'm helping to provide learning opportunities for kids." – Liz Bowermaster

Become a Sustainer Today!
pcei.org/monthly-giving

Engaging the Senses, Connecting With Nature

by Daniel Sidder, *PCEI Nature Center Programs Coordinator / AmeriCorps Member*

“It’s go time,” says **PCEI’s Lead Environmental Educator, Katie Peterson**. The sound of the school bus, along with the growing buzz of chatter is a dead give away that students are arriving. As the bus turns the corner the commotion gets louder. They see us. We’re clad in grey AmeriCorps shirts, with smiles large and clipboards in hand.

Throughout the last year this has become a recurrent scenario for PCEI’s educators. Generous contracts, grants and donations have allowed for **more field trip opportunities**, transforming learning into place-based education and an opportunity to get students out in nature.

The response from teachers and students alike has been overwhelmingly positive. **Jefferson Elementary School 5th grade teacher Jill Brockmier** says, “I loved the hands-on activities with water testing. The kids were allowed to use their science skills.” As Environmental Educators, this is music to our ears. Our goal is to engage the senses, promote exploration and prod further discussion.

The buzz dies down and the tail lights disappear. “Ice cream?” says **Education Outreach Coordinator Heather Huston**, followed by enthusiastic nods and smiles. Happy kids and teachers mean happy educators!

Learn more about PCEI’s education programs at pcei.org/learning.

Reading, Worms and Running Around: That’s Storytime!

by Amy Wright, *PCEI Administrative Assistant*

“Which of the Summer Storytime books has been your favorite?” I ask a family of five at the PCEI Nature Center. “We liked the one about composting worms,” says **Camille** as her children nod their heads in agreement. “Yeah,” says **Ethan, age ten**, “we got to learn which end of the worm was the head and which end was the bum.” His little brother, **Joe, age three**, chimes in, “Don’t talk about bums!” Eyebrows raised and smiling slightly, Camille says, “We found that book to be *most* informative.”

Brittany, mother of **17-month-old Ayla** and nanny to several preschool children, says that she loves PCEI’s Summer Storytime because, while the older kids have fun practicing “listening skills” and “sitting still,” her toddler can run around and play at the PCEI Nature Center.



PCEI truly appreciates the time and creativity that **Kim Harris-Thacker** and **Olivia Alexander** put into coordinating our most successful Summer Storytime ever. Our wonderful community readers kept their audiences engaged and entertained: **Jade and Ben Stellmon, Madeleine Johnson, Sandye Crooks (Moscow Recycling Center), Lora Lee Boal, Mayor Nancy Chaney, Joan Alexander, Brooke Lowry (Safe Routes to School), Kim Harris-Thacker, and Olivia Alexander**. **BookPeople of Moscow** generously gave \$15 gift cards to every child who attended 10 or more Storytimes and 20% off the featured book of the week. Many thanks also to **Krissy Lindsay, Meridian Wappett, Isabelle Wappett, Elias Wappett, Aaron Johnson, Corey Johnson, and Chloe Johnson** for additional support.

For the Storytime book list and reader bios, visit pcei.org/storytime. Enjoy more photos at tinyurl.com/2013-PCEI-Storytime.



Our 2013 Education Partners

Renaissance Charitable Foundation

City of Moscow | City of Pullman
Idaho Gives

Latah County Community Foundation
US Forest Service

Palouse Discovery Science Center
Moscow Mardi Gras, Inc. • Women of the Moose Chapter 710
and individual donations from PCEI Supporters

Thank you for your generous support!



Continued Restoration Efforts at Rose Creek Nature Preserve

By Ryan Lazo, *PCEI Nature Center and Watershed Steward / AmeriCorps Member*

Since acquiring the Rose Creek Nature Preserve from the **Nature Conservancy of Washington** in 2008 and additional acres from **the Hudson family** in 2011, PCEI has been working diligently to restore the 14.8-acre parcel of **endangered Palouse Prairie steppe ecosystem**. This unique landscape also features the Palouse's distinct **quaking aspen-black hawthorn-cow parsnip community type**.

In an effort to recover both state and federally threatened and endangered species at the Rose Creek Nature Preserve, PCEI is excited to partner with the **US Fish and Wildlife Service**. This year marks the 40th anniversary of the Endangered Species Act so this additional funding could not have come at a better time. PCEI will focus on restoring crucial habitat for native plants such as **Palouse milkvetch** (*Astragalus arrectus*), **Broad-fruit mariposa** (*Calochortus nitidus*), **Palouse thistle** (*Cirsium brevifolium*), **Palouse goldenweed** (*Pyrrocoma liatrifomis*), **Jessica's aster** (*Symphotrichum jessicae*), **Douglas' clover** (*Trifolium douglasii*), and **Spalding's catchfly** (*Silene spaldingii*).

In addition to providing critical habitat for endangered plants, the preserve also provides habitat for native animal species. While controlling invasive weeds at the preserve, PCEI staff and volunteers from **Washington State University** discovered a newly built beaver dam. This is good news because the small ponds created by beavers support habitat for numerous birds, insects, ungulates, amphibians, and trees. Additionally the ponds help to settle out sediment and improve water quality.

There is no better time than the present to visit the Rose Creek Nature Preserve. Please use designated parking spots along the road and follow the rules outlined at the trailhead. Be sure to bring a pair of binoculars because you never know what birds or other critters you might see. Happy hiking!

PCEI is grateful for support from Inland Northwest Community Foundation, Palouse Heritage Fund, Fred Hudson, Nancy Collins-Warner, and our Rose Creek Work Days volunteers. For more information, visit pcei.org/rose-creek.

PCEI Nature Center as Artistic Incubator

by Gerri Saylor, *PCEI 2013 Artist-in-Residence*

"We were born before the wind ..." — Van Morrison

In recent years, I've been inspired by memories of landscapes that I have known and loved to create installations for museums and galleries. This spring, after an artist residency in the North Cascades, I came home craving an opportunity to make art outdoors. When PCEI said yes, absolutely yes, the 12.3-acre PCEI Nature Center became my studio.

There is something uniquely liberating about trusting sensory experience to refresh one's creative spirit. I felt myself open to the possibilities of the wind, the grasses, the ponds, the soil, the birdsong, the plum trees and willows, bits of this and that I found during my walks on the trails—leaves, feathers, curls of birch bark.

In the end, it was the wind, clouds and sky that grabbed hold of my imagination and wouldn't let go. But how does one express the line, the sharp and sensuous curves of its currents, the essence of something so — invisible? Or the way it speaks intrinsically to the transitory nature of life itself?

These questions were contagious, prompting collaboration with poet-in-residence **Karen Trujillo**, who responded through her poetry and photography for PCEI's **2013 Artwalk Inside an Artwalk**. Collaborating with **Steve Streets**, I fabricated two sculptures to celebrate the raw power of wind—its beauty as reflected in billowing clouds and dancing grasses.

Everything about PCEI encourages a genuinely meaningful, intimate way of seeing and sensing. What an honor and privilege it was for me to draw from its nature gallery. Thank you!



Jessica's aster (Symphyotrichum jessicae), one of several plant species endemic to the Palouse region.



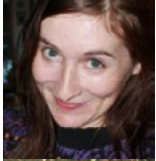
Top: Gerri Saylor prepares to add blue and white fabric to "Wind Cloud Sky" at the PCEI Nature Center. Bottom: Gerri's bright red "Line Dancing"

New Faces at the Palouse-Clearwater Environmental Institute



Wendy Lawrence, *Contract and Grant Coordinator*

Born in Massachusetts, Wendy has lived in Moscow for over 20 years. Wendy has degrees in Anthropology and Animal Behavior, and a wide range of experience in both public and private sectors, including research and administration. She likes to ski, play hockey, quilt, travel, be with her family and walk her dog, Scout.



Amy Wright, *Administrative Assistant*

Amy, a recent graduate of Evergreen State College, has always had an affinity for wilderness conservation and sustainable living. Though her earliest career aspiration was to become a penguin, she is now focusing on applying her knowledge of photography and graphic design to promote PCEI's mission.



Hannah Glader, *Environmental Educator / AmeriCorps Member*

Hannah earned her degree in biology from University of Wisconsin-Eau Claire. She has a passion for ecology/ environmental conservation and believes that educating youth about the natural world is the first step towards building a sustainable future. Hannah likes to be outdoors, preferably biking, hiking and/or camping.



Brendan Jackson, *Environmental Educator / AmeriCorps Member*

Brendan, a native of Minnesota and graduate of the University of Wisconsin-Madison, loves helping young people experience and appreciate the values of wilderness, nature and the environment. His resume includes youth trail guiding, leading winter nature trips, mushing sled dogs and working to protect Minnesota's Boundary Waters from sulfide mining.



Ryan Lazo, *Nature Center and Watershed Steward / AmeriCorps Member*

Originally from Virginia, Ryan grew up hiking in the Shenandoah National Park and he moved west to pursue his love for the outdoors. He has a BA in Anthropology and Environmental Studies from Fort Lewis College in Colorado. Ryan is excited to share his passion for the outdoors through public outreach and hands-on work.

Meet Our 2013-14 AmeriCorps Members

Amanda Argona, Moscow Farmers Market Volunteer Coordinator, *City of Moscow (Moscow)*

Amanda is furthering her knowledge of the interaction between communities and food systems by assisting the City of Moscow with the local farmer's market.

Chris Cummings, Gleaning and Volunteer Coordinator *Backyard Harvest (Moscow)*

Chris gathers, gleans and grows fresh produce to be shared with low-income community members.

Hannah Glader and Brendan Jackson, Environmental Educators, *Palouse-Clearwater Environmental Institute (Moscow)*

Hannah and Brendan deliver education programs to local students to promote conservation and connection to nature.

Kacey Kai, Environmental Educator and Volunteer Coordinator, *Deer Flat National Wildlife Refuge (Nampa, ID)*

Kacey is active in volunteer recruitment, developing service learning partnerships, and conservation efforts at the refuge.

Ryan Lazo, Watershed and Nature Center Steward *Palouse-Clearwater Environmental Institute (Moscow)*

Ryan helps plan, implement, and coordinate regional restoration activities as well as projects at PCEI's Nature Center.

Joseph Reber, Hazards Assessment Specialist *UI Geography Program / U.S. Forest Service (Moscow)*

Joseph does applied research on the socio-economic



consequences of climate-related changes in the goods and services produced from forests and grasslands.

Christine Schuette, Sustainable Planning Specialist *UI Building Sustainable Communities Initiative / Park Studies Unit (Moscow)*

Christine designs projects and does field work and applied research on conservation issues related to public land use.

Daniel Sidder, PCEI Nature Center Programs Coordinator *Palouse-Clearwater Environmental Institute (Moscow)*

Daniel coordinates events and projects to help maintain and improve the PCEI Nature Center.

Emily Slike, Youth Engagement Specialist *Wood River Community YMCA (Ketchum, ID)*

Emily is creating and implementing community programs that develop the whole person in spirit, mind and body.

Find out more about PCEI's AmeriCorps Placement Program at pcei.org/amicorps.

Barn Quilts Pop Up on the Palouse

by Katie Peterson, *PCEI Lead Environmental Educator*

Thanks to some talented young artists, the **PCEI Nature Center**, the **1912 Center**, and the **Moscow Chamber of Commerce** now feature some unique and colorful artwork. Participants in **PCEI's "Nature and Art Summer Camp"** in June helped



Two artists from PCEI's "Nature and Art Summer Camp" display their own mini barn quilt creations.

paint three barn quilts that are now on display at the above locations.

A **barn quilt** is a 4'x4' or 8'x8' piece of plywood painted with a design and hung on barns or other buildings. The first official quilt trail was begun in 2001 in Adams County, Ohio to honor Donna Sue Groves' mother, Maxine, a noted quilter. There are now over 3,000 barn quilts across the United States. A brochure about our local barn quilt trail will be available at the PCEI Nature Center and the Moscow Chamber of Commerce later this fall.



*PCEI's barn quilt features a stylized camas blossom. We would like to thank the **Latah County Community Foundation** and **Moscow Building Supply** for their generous support of this project.*

Reduce Your Carbon Footprint This Winter

by Patrick Johnson, *PCEI Sustainability Intern*

At the Palouse-Clearwater Environmental Institute, we understand the importance of every single decision we make to reduce our carbon footprint. There's no time to waste to cut our consumption of fossil fuels. The good news is that you can make significant changes right now *and* save money!

Transportation: One of the largest contributors to atmospheric carbon is our inefficient transportation system. Despite a need for macro-level reform in this area, you can still make progressive lifestyle changes on a personal level.

Bike or walk to work as an invigorating replacement for caffeine in the morning. Create a **walking school bus** with neighborhood families. Take advantage of **local bus services** and **car pool programs** such as palouserideshare.org. During the holiday season, consider the carbon impact of flying. A single round-trip ticket from the Pullman-Moscow Airport to my home in Kentucky generates almost 2,000 lbs of carbon!

Purchasing: Make this holiday season a plastic-free celebration. Eliminate the use of "disposable" plates and cutlery (pcei.org/plate-project), plastic toys that will be played with only a couple of times, and gifts encased in plastic. If you must buy more "stuff," bring reusable bags for all your

shopping and **buy local and sustainably-made products**. Better yet, make it a "stuff-free" season and **give alternative gifts** such as donations to local charities through the **Alternative Giving Market of the Palouse** (agmpalouse.org).

Energy Efficiency: On a cold winter's day, it can be comforting to come home to a warm, cozy house after a long day at work. While this can be quite enjoyable, it undoubtedly has carbon impacts. While PCEI is not advocating that you sleep in scarves and mittens, we encourage you to **turn the thermostat down** at night and when you're not home. **Turn off/unplug** items not in use. Let your laundry **air dry**. Take advantage of **passive solar heating** on sunny days. **Close doors and use curtains** or honeycomb blinds to reduce heat loss from your home.

It can be hard to make changes to reduce our carbon footprint when we can't see immediate results. Instead, **focus on concrete goals that are close to home**, like improving your health, reducing holiday stress or saving money.

Do you have other tips for saving energy and living more sustainably? Visit pcei.org/living to share your ideas. We'll add them to our web site and help spread the word!

Environmental News (ISSN# 1087-9374) is published quarterly by the Palouse-Clearwater Environmental Institute. 3rd Class postage paid in Moscow, ID.

Articles for publication and letters to the editor are welcome. Opinions expressed in the newsletter are those of individual authors and not necessarily those of PCEI.

Environmental News is mailed quarterly to current PCEI members and donors. Join today! Call (208) 882-1444 or visit pcei.org/donatejoin.

Template Design: Teva Hopper
Editors and Contributors:

Jen Hiebert, Amy Wright, Patrick Johnson, Gerri Saylor, Katie Peterson, Ryan Lazo, Jim Ekins, Daniel Sidder, Tom Lamar, Judy Brown, Carolea Webb, Heather Huston, Joan Alexander, Wendy Lawrence

Printed on FSC and GreenSeal™ certified paper and contains 30% recycled post-consumer fiber.

Call for PCEI Board Members

by Jim Ekins, *Co-President, PCEI Board of Directors*

It has been a real pleasure to serve on the Board of Directors of the Palouse-Clearwater Environmental Institute (PCEI) over the last three years. As an outgoing Co-President (working closely with Co-President Carole Wells), I would like to encourage you to consider serving as a PCEI Board member.

Board members are critical to the effective functioning of PCEI. The Board works in a collaborative manner, to advise and provide guidance for the continued health and strength of the organization. The Board sets policy for the organization, ensures that it is operated in a legal, ethical and professional manner, and helps raise funds for its operation. If you are passionate about PCEI's work and want to be part of a process that promotes learning, connection and community, please feel free to contact me or any other Director (pcei.org/board).

Janet Morris joined the PCEI Board of Directors last year and couldn't be happier with her decision. "One of the things I love about PCEI is their openness and positive approach to new ideas. I'm passionate about environmental sustainability and I'm amazed by all that PCEI has accomplished to create a more sustainable future for Idaho and Eastern Washington. **If you are a supporter of PCEI and seeking a longer-term leadership contribution as a Board Member, I highly recommend the experience.**"

PCEI members will be electing 3 new Board members at the **Annual Membership Meeting on Tuesday, December 3, 2013 6:30pm-9pm** at the 1912 Center. The board nomination form is available online at pcei.org/board-nomination. Hard copies are available upon request. **All nominations are due by November 20, 2013.**

Palouse-Clearwater Environmental Institute

PO Box 8596 Moscow, ID 83843

Return Service Requested

Learning

Serving

Restoring

Living

YOUR RENEWAL DATE

NOT A MEMBER? JOIN PCEI TODAY!

Fall 2013

In Memoriam

We are saddened by the passing this year of two long-time supporters of PCEI.

Bill London



May 2007: Bill London and Tom Lamar (PCEI Executive Director) visit the Willow Venzke Willow Grove at the PCEI Nature Center

Malcolm Renfrew



September 2003: Tom Lamar with Malcolm Renfrew at the 1912 Center

Non-Profit Org.
US Postage
PAID
Moscow, ID 83843
Permit No. 417

Go Paperless!
Ready to ditch the paper?
pcei.org/gopaperless